

**DAIKIN ABC I/P PRINTED CIRCUIT BOARD KIT FOR VRV4**  
 READ THE INSTRUCTIONS PROVIDED HEREIN CAREFULLY IN JAPANESE AND ENGLISH. THIS KIT CORRECTS.  
 BRP2A81 1P334835-1

**PLEASE READ THESE "SAFETY PRECAUTIONS" CAREFULLY BEFORE INSTALLING**

- The following are the precautions you need to indicate and classify precautions in this manual. Always read the important safety information provided with this.
- WARNING** Failure to follow these instructions properly may result in personal injury or loss of life.
- CAUTION** Failure to observe these instructions properly may result in property damage or personal injury, which may be serious depending on the circumstances.
- Make sure that the unit operator properly after completing the installation, and explain to the customer how to operate the unit and how to maintain it.
- Also, advise the customer that they should have this installation manual along with other manual for future reference.
- At the time of the installation, read the installation manual of the unit along with the electric diagram.

**WARNING**

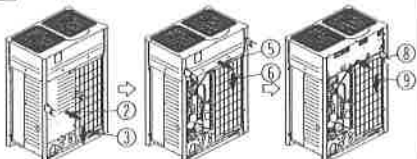
- All your dealer or qualified personnel to carry out installation work.
- Do not attempt to install the air conditioner yourself. Improper installation may result in electric shocks or fire.
- Do not use the specified accessories and parts for the installation work.
- Failure to use the specified parts may cause the unit to fail or result in electric shocks or fire.
- Make certain that all electrical work is carried out by qualified personnel according to the local laws and regulations and this installation manual, using a separate circuit.
- Insufficient capacity of the power supply circuit or improper electrical connection may lead to electric shocks or fire.
- Turn off the unit before touching electrical parts.
- An electric shock may be received if charged parts come in contact with human.
- Be sure to use the specified wires and fix them securely so that no external force resulting from the wires will be imposed on any terminal connection.
- Improper connection or peeling of wires may result in abnormal heat buildup or fire.
- Position the wires so that the cover will not vibrate when wiring the power supply.
- Make sure that the cover is attached correctly. If the cover is attached improperly, electric shocks or fire may result.

**CAUTION**

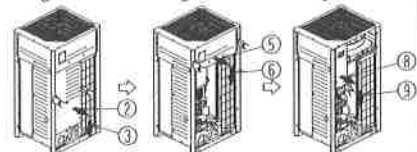
- Do not install this kit in the following locations:
  1. Where there is a high concentration of mineral oil fumes or vapour for example a kitchen.
  2. Where corrosive gas, such as sulphuric acid gas, is produced, acid or alkaline steam outdoors, or the air contains a high salt content, such as places on the sea, flats may be corroded and fall etc.
  3. Near machinery emitting electromagnetic waves or in places with great voltage fluctuations, such as factories.
  4. Where flammable gas may leak, in places with carbon fiber or graphite dust suspended in the air or with volatile flammables such as paint thinner or gasoline, or in vehicles or vessels.
  5. Where water drains vertically, falls from overhead, or wastes overflow.
 Caution against using contact with electrical parts can cause malfunction, shock or fire.

**4 Installation Method**

**Before installation** • Remove the front panel and Electrical Components Box cover.  
 for 14-20 HP

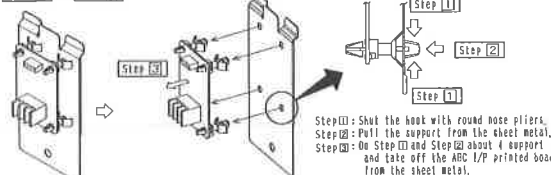


for 6-12 HP



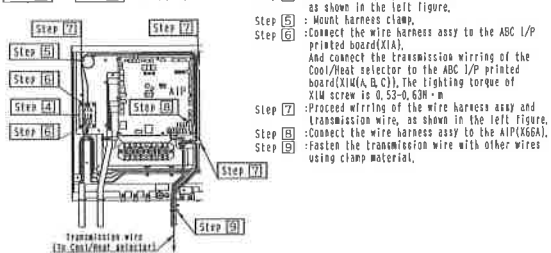
- ①: Remove the screws on the front panel.
- ②: Slightly lift the panel.
- ③: Pull the panel then forward and remove it.
- ④: Remove the screws on the front panel(upper).
- ⑤: Slightly lift the panel.
- ⑥: Pull the panel then forward and remove it.
- ⑦: Remove the screws on the Electrical Components Box cover.
- ⑧: Pull the cover downward till its top shows.
- ⑨: Pull the cover then forward and remove it.

Step 1) ~ Step 3)



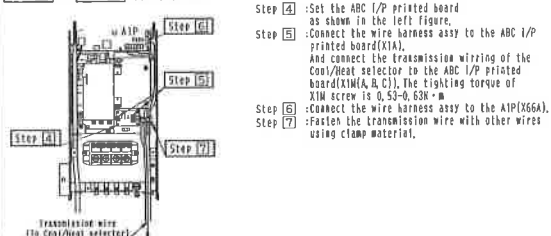
Step ①: Push the hook with round nose pliers.  
 Step ②: Pull the support from the sheet metal.  
 Step ③: On Step ① and Step ② about 4 support and take off the ABC I/P printed board from the sheet metal.

Step 4) ~ Step 9) for 14-20 HP



- Step ④: Set the ABC I/P printed board as shown in the left figure.
- Step ⑤: Mount harness clamp.
- Step ⑥: Connect the wire harness Assy to the ABC I/P printed board(X1A). And connect the transmission wiring of the Cool/Heat selector to the ABC I/P printed board(X1W(A, R, C)), the tightening torque of X1W screw is 0.53-0.63N·m.
- Step ⑦: Proceed wiring of the wire harness Assy and Transmission wire, as shown in the left figure.
- Step ⑧: Connect the wire harness Assy to the AIP(X6GA).
- Step ⑨: Fasten the Transmission wire with other wires using clamp material.

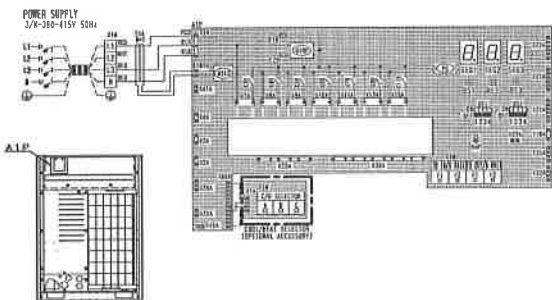
Step 4) ~ Step 7) for 6-12 HP



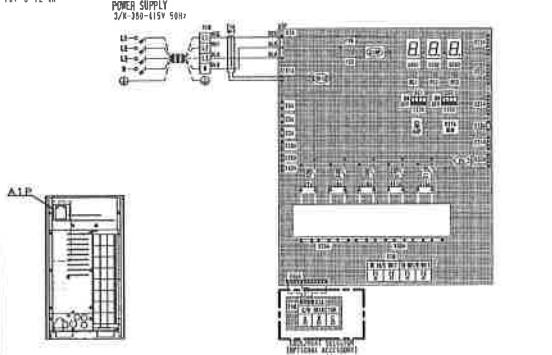
- Step ④: Set the ABC I/P printed board as shown in the left figure.
- Step ⑤: Connect the wire harness Assy to the ABC I/P printed board(X1A). And connect the transmission wiring of the Cool/Heat selector to the ABC I/P printed board(X1W(A, R, C)), the tightening torque of X1W screw is 0.53-0.63N·m.
- Step ⑥: Connect the wire harness Assy to the AIP(X6GA).
- Step ⑦: Fasten the Transmission wire with other wires using clamp material.

**1 Wiring Diagram**

for 14-20 HP



for 6-12 HP

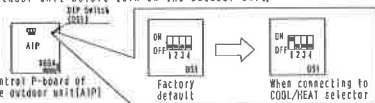


**2 Components** • Please make sure all the below listed components are in the package prior to the installation.

Installation manual	ABC I/P printed board kit	Wire harness Assy	Clamp material(1)	Harness clamp	4 POINT NUTS AND LOCKING SCREW
1 copy	1 pc.	1 pc.	1 pc.	1 pc.	1 pc.

**4 Setting of the outdoor unit**

Setting of the outdoor unit when connecting to COOL/HEAT selector.  
 1. Turn on DIP switch (DS-1) which is located on the control P-board (A1P) of the outdoor unit before turn on the outdoor unit.



2. Carry out trial operation after turn on the outdoor unit.  
 For trial operation method, refer to Installation manual of the outdoor unit.

**5 After Assembling**

1. Please check after all the procedures are followed to make sure there is no such connector/terminal in the Electrical Components Box left disconnected.
2. Put back the Electrical Components Box cover in the reverse way as it was removed.
3. Put back the front panel in the reverse way as it was taken off.